

Specifications			
Product	Automated Nucleic Acid Isolation System QuickGene-Auto240L		
Throughput	1 to 24 samples per run		
Primary tube sizes	φ16 × 100mm	φ13 × 100mm	φ13 × 75mm (option)
DNA storage tubes	2D barcoded Matrix™ 1.4mL tube or 1.5 mL Microtube*		*Need to turn OFF the Barcode mode when using 1.5 mL Microtube
Protocols	[FULL-AUTO]		[SEMI-AUTO]*
	Whole blood DNA 2mL; Plasma DNA 2mL;	Whole blood DNA 1mL Plasma DNA 1mL	Whole blood DNA 2mL; Plasma DNA 2mL; Whole blood DNA 1mL Plasma DNA 1mL
Instrument components	<div style="display: flex; align-items: flex-start;"> <div style="flex: 1;"> <ul style="list-style-type: none"> Robot unit Lysate preparation unit Isolation unit Tip ejector Loading position of sample Loading position of consumable LED light UV lamp Barcode verification system </div> <div style="flex: 2; text-align: center;"> </div> </div>		
	Electric control	Internal microprocessor	
Operating method	Touch screen		
Power supply	120/220/230/240 V, 50/60 Hz, 10 amp		
Dimensions	W1280 × H990 × D720 mm		
Weight	300kg		



Consumables		
Product	Reference Code	Pcs
QuickGene DNA whole blood kit L	KQG-DB-L	48 prep
QuickGene Auto240L Consumables Kit	KQG-240L-CK	48 prep
QuickGene DNA Tissue kit L	KQG-DT-L	48 prep

Instrument	
Product	Reference Code
QuickGene Auto-240L	KQG-99-240L-B



Contact information

ADS Biotec Limited
40 Watt Road
Hillington Park
Glasgow, G52 4RY UK
Registered in England and Wales

Phone: +44 (0)141 892 8800
Fax: +44 (0)141 883 5967
Email: info@adsbiotec.com
Web: www.adsbiotec.com

Corporate Office

ADS BIOTEC Inc.
7409 Irvington Road
Omaha, NE 68122 USA
Phone: 888-974-7483
Email: info@adsbiotec.com
Web: www.adsbiotec.com

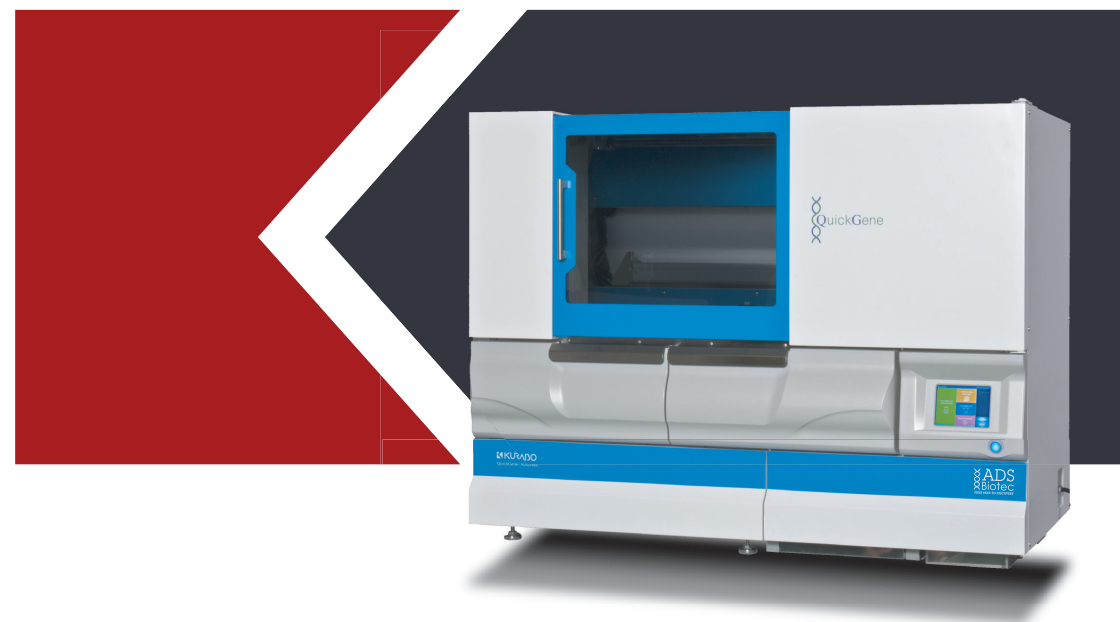


602601-B Rev 1

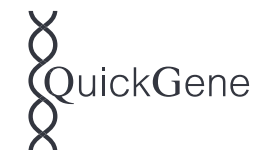


Automated Nucleic Acid Isolation System

QuickGene - Auto240L



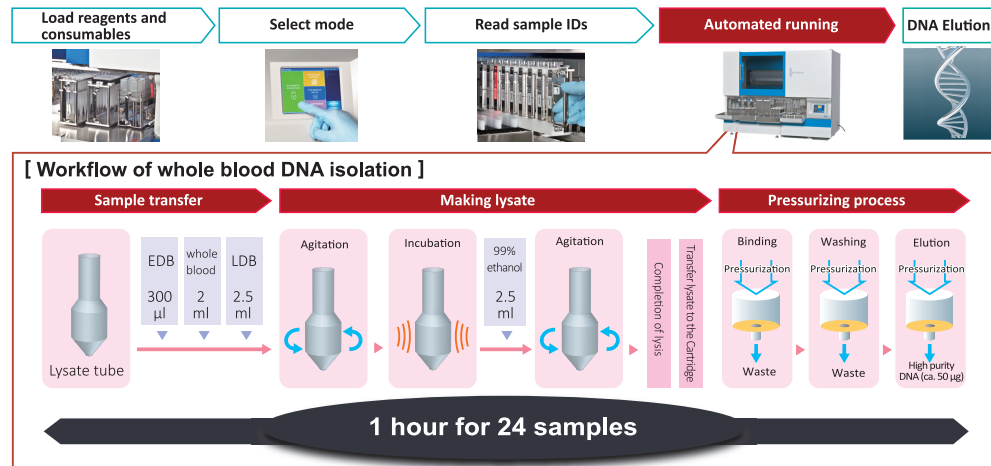
For Large Volume
Whole Blood DNA
Extraction



The first fully automated system in QuickGene series

The QuickGene series uses a patented porous membrane to realize a quick and high purity, high yield in nucleic acid extraction. Developed by Kurabo, the new QuickGene-Auto240L is the first and only automated system using QuickGene unique membrane production technology to isolate 2ml whole blood genomic DNA from primary tube samples to final DNA storage tubes. Automated the previous manual labor to reduce user's burden and support their high throughput in routine analytical work.

Completely automate the DNA extraction process from primary tube to final DNA storage tubes, ensuring a cross-contamination-free and no human error process.



Max. 24 samples in a single run with the process time in 1 hour.

Automate "Sample transfer from primary tube", "Making lysate", "DNA Binding", "DNA Washing" and "DNA Elution" under samples tracking. Perform DNA isolation of 24 samples within 1 hour.



Automated large volume of whole blood DNA extraction from primary tube samples to final DNA storage tubes to realize a true walk-away operation.

■ Easy-to-use design

Full color touch screen monitor makes the new system more usable. All labware items, holders are designed to be easy to load to provide a quick and simple operation.



■ Full barcode reading system

Read and record barcodes on both primary tubes and DNA storage tubes by the internal barcode scanners. Separate log for multiple operator or and multiple applications is allowed. Sample IDs and operation history can be automatically saved by the machine and electronic file can be



exported by USB memory stick.

■ Sample liquid level detection

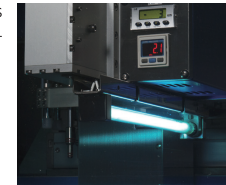
Provide liquid level detection for accurate pipetting using positive air pressure.

■ Process 2ml of whole blood

Produce high yields and consistently high quality DNA by using reliable QuickGene DNA whole blood kit L. Enable to automated isolation of Approx. 50µg genomic DNA from 2ml whole blood sample, suitable for downstream genetic analyses.

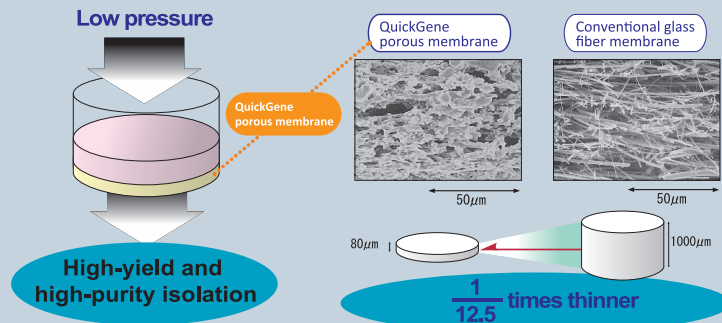
■ UV irradiation

Built-in UV Lamp enables decontamination and minimizes the sample cross-contamination.



Core technology of patented porous membrane for high-purity isolation

The nucleic acid adsorptive medium used in QuickGene series is a porous membrane developed through application of advanced polymer membrane production technology. It is only 80µm thick, making it incomparably thinner than conventional glass fibers. Because of the outstanding adsorptive and desorptive performances of the membrane, nucleic acid can be rapidly and reliably isolated at low pressure without being damage, which realizes high-quality nucleic acid isolation.



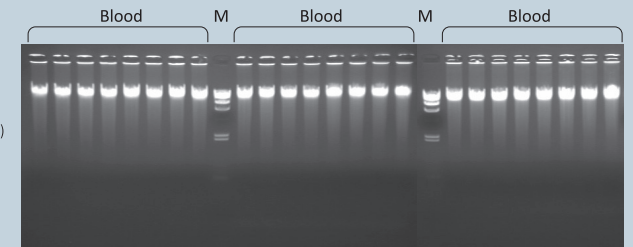
High-yield, High-purity

- QuickGene-Auto240L can consistently isolate high yield of approx. 50µg DNA.
- The isolated DNA can be used directly in PCR, RT-PCR and NGS.

■ Fresh human whole blood (Leukocyte: 8×10^3 cells/µL)
Yield and purity of genomic DNA

DNA Yield (µg)	68.7
Purity (260/280)	1.9
Purity (260/230)	2.1

Average of 24 samples



M: λ Hind III Marker