

HANABI-HSI

System Interface for HANABI-PV

ADS Biotec offers the most advanced and state-of-the-art technology in cytogenetics automation. The **HANABI System Interface-PV (HSI-PV)** is designed for today's cytogenetic laboratories that require increased productivity and accurate workflow information data management. The HANABI-HSI-PV accessory is compatible with the HANABI-PV Metaphase Auto-Spreader Mini and provides users the means to capture operational data from their runs for later retrieval and review.

The HANABI System Interface PV (HSI-PV) captures data output from the HANABI PV and holds it for retrieval by the operator, or for upload to the user's Lab Information System computer network.

This is accomplished by running an application (called HSI-PV) on the Microsoft Surface Pro tablet that is configured to capture a data stream issued from the HANABI-PV via its RS232 communication port.

All run parameters that are set and stored on the HANABI-PV become part of this run stream. Each batch run on the instrument is given a unique RUN number by which it is identified. The data captured from the HANABI-PV is saved in Excel and XML format by the HANABI-HSI-PV application.

Features and Benefits

- Increased laboratory productivity
- Access archived data
- Tracing productivity
- Compatible with our HANABI-PV Metaphase Auto-Spreader Mini
- Easy-to-use software interface
- Windows 10 Professional Operating System
- Excel and XML format data output

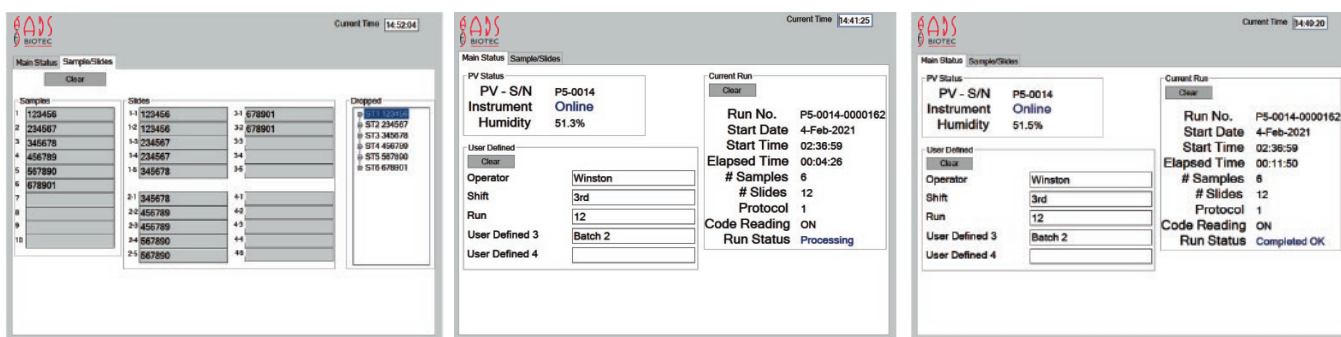


Increased Productivity with High Quality and Consistency

Specifications

Item	Description
Operating System	Windows 10 professional
Tablet	Microsoft Surface Pro
Connection Cable	Serial RS232C
Data Output	Excel and XML

Workflow



Order Information

Product Description	Catalogue Number
HANABI Systems Interface PV (HSI-PV)	LUP115



Contact Information

Corporate Office
 ADS Biotec Inc.
 7409 Irvington Road
 Omaha, NE 68122 USA

Phone: 888-974-7483
 Email: info@adsbiotec.com

ADS Biotec Limited
 40 Watt Road
 Hillington Park
 Glasgow, G52 4RY UK

Phone: +44 (0)141 892 8800
 Fax: +44 (0)141 883 5967
 Email: info@adsbiotec.com