

## HANABI P1000

### In-situ Harvester

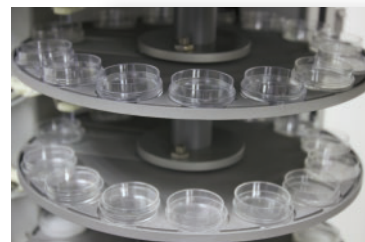
ADS Biotec offers state-of-the-art technology for cytogenetics automation. The **HANABI P1000** In-situ Harvester is designed for today's cytogenetics laboratories that require increased throughput and improved productivity while enabling consistent, high-quality results.

Specifically developed to meet the in-situ requirements of the cytogeneticist, the **HANABI P1000** can be configured to process samples in up to sixty-five (65) petri dishes per batch. The **HANABI P1000** can also be configured to process samples in up to forty (40) chamber slides per batch. When processing samples in petri dishes or chamber slides, the **P1000** automates the injection and aspiration of reagents utilizing any one of eight customized protocols.



### Features and Benefits

- Standardization of the in-situ harvesting process
- Rapid, high sample throughput by multi-level, parallel tissue processing
- Integrated fixative mixing, providing fresh fixative with no operator intervention
- Ergonomic compact design
- Integral Fume extraction
- Easy to use hand-held controller
- Extensive alarm system
- Multiple dispensing and aspiration probes
- Easy programming capability
- Range of tried and tested harvesting protocols supplied
- Developed in collaboration with leading cytogenetic laboratories



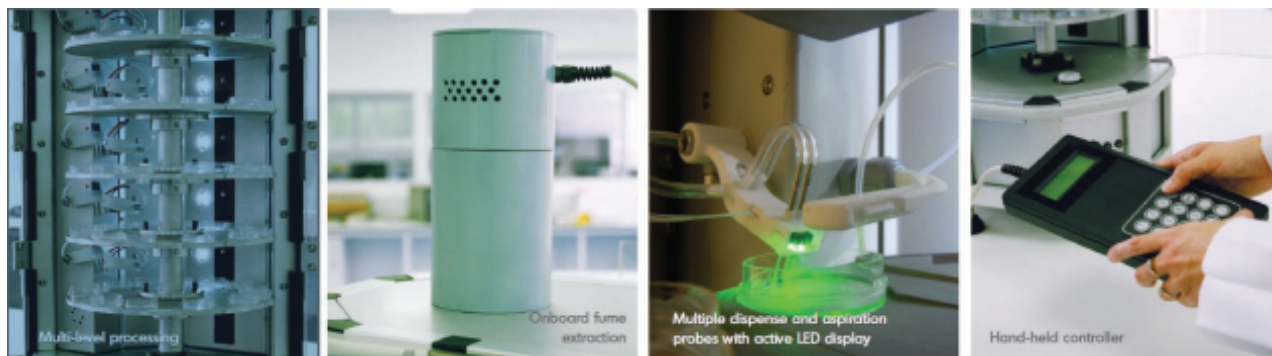
---

Increased Productivity with High Quality and Consistency

---

# HANABI P1000

In-situ Harvester



## Specifications

Electrical	Specifications
Input voltage	85-264VAC (Universal)
Input frequency	47-63 Hz
Input current	3.2A max at 115VAC 2.0A max at 230VAC
Safety ground leakage current	90uA max at 115VAC, 60Hz 150uA max at 230VAC, 50Hz
Environmental	
Operating temp	15° V to 45° C
Relative humidity	5-95% non-condensing
Physical	
Top mounted scrubber unit dimensions	11 cm (4.5") dia x 24 cm (10")
Harvester	
Dimensions	37 cm (14.5") w x 73 cm (28.75") h x 59 cm (23.25")
Net weight	45 kg approximately
Shipping	
Dimensions	40 cm (16") w x 95 cm (37.5") h x 65 cm (25.5")
Net weight	60 kg approximately

## Order Information

### Product Description

### Catalogue Numbers

HANABI P1000 In-situ Harvester with Auto-Fixative Mixer

HGGS-99-P1010-B

Chamber slides accessory (optional)

GG3-CA240



## Contact Information



### Corporate Office

ADS Biotec Inc.  
7409 Irvington Road  
Omaha, NE 68122 USA

Phone: 888-974-7483  
Email: [info@adsbiotec.com](mailto:info@adsbiotec.com)



ADS Biotec Limited  
40 Watt Road  
Hillington Park  
Glasgow, G52 4RY UK

Phone: +44 (0)141 892 8800  
Email: [info@adsbiotec.com](mailto:info@adsbiotec.com)



[www.adsbiotec.com](http://www.adsbiotec.com)