

Easy isolation from various types of samples

- Appropriate kit selectable depending on sample.

SPECIFIC ISOLATION KITS

- QuickGene isolation kits are optimized for the system to isolate DNA and RNA in the shortest time and with the highest quality.
- Environmentally friendly isolation can be conducted without hazardous organic solvents.

	Samples	Isolation kits	Reference code	Isolation Time	Isolation example
For DNA isolation	Human/Animal whole blood (EDTA blood, heparin blood), Buffy coat, Plasma, Serum	DNA whole blood kit S	KQG-DB-S [For 96 samples]	45 min / 48 samples	ca. 5µg / 200µl whole blood
	Animal tissue, Plants, Insects, Fish and Shellfish, Cheek swab, Paraffin-embedded samples, Cultured cells, Bacteria, Virus, Materials, manufactured goods	DNA whole blood kit S	KQG-DT-S [For 96 samples]	50 min / 48 samples	ca. 4µg / 5 mg Balb/c Mouse tail
	Plasmid	Plasmid kit S II	KQG-PL-S2 [For 96 samples]	40 min / 48 samples	ca. 12.5µg / 1 ml culture PBlueScript II/GAPDH/DH5a
For RNA isolation	Animal tissue, Insects, Virus, etc.	RNA tissue kit S II	KQG-RT-S2 [For 96 samples]	60 min / 48 samples	ca. 100µg / 30 mg Mouse liver
	Adherent /Non-adherent cultured cell (Hela, HL60, etc.); Plant tissue, etc.	RNA cultured cell kit S	KQG-RC-S [For 96 samples]	60 min / 48 samples	ca. 10µg / 1x10 ⁶ cells HL60 cell
	Cultured cell on 6/10 cm dish (Maximum number of cells is 1x10 ⁶)	RNA cultured cell HC kit S	KQG-RC-S2 [For 96 samples]	60 min / 48 samples	90~150µg / 10 cm dish Cultured HEK293 cell
	Leukocytes separated by Ammonium chloride Erythrocytes of whole blood or Ficoll fraction	RNA blood cell kit S	KQG-RB-S [For 96 samples]	70 min / 48 samples	ca. 4.5µg / 1x10 ⁷ cells Leukocytes

Instrument

Product	Reference Code
QuickGene Mini-480	KQG-99-480M-A

QuickGene - Mini480 Specifications

Overview

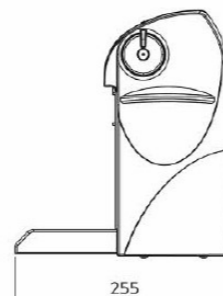
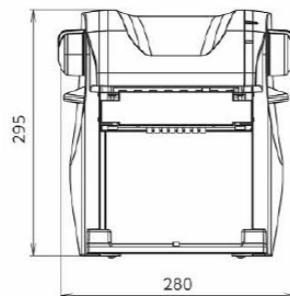
- Throughput: 1 to 48 samples per run

Physical specifications

- Dimensions: 280(W)x260(D)x300(H) mm
- Weight: Approx. 3.3 kg

Physical specifications

- Supply voltage : AC100~240V
- Power supply frequency: 50/60 Hz
- Operating conditions : Temperature: 15~30°C
Humidity: 30~80% (non-condensing)



*Research use only

Contact information

ADS Biotec Limited
40 Watt Road
Hillington Park
Glasgow, G52 4RY UK
Registered in England and Wales

Phone: +44 (0)141 892 8800
Fax: +44 (0)141 883 5967
Email: info@adsbiotec.com
Web: www.adsbiotec.com

Corporate Office

ADS BIOTEC Inc.
7409 Irvington Road
Omaha, NE 68122 USA
Phone: 888-974-7483
Email: info@adsbiotec.com
Web: www.adsbiotec.com



602602-A rev 5



Nucleic Acid Isolation System

QuickGene - Mini480



Personal Device For Nucleic Acid Extraction



Personal nucleic acid isolation device, one for each person

maximum throughput, up to 48 samples!!!

QuickGene-Mini480 is a high-throughput compact system requiring no centrifugation in the Nucleic acid isolation process, enabling rapid nucleic acid isolation and delivering high yield and purity of samples. DNA/RNA can be easily isolated from various samples including whole blood/tissue/cells/plants/virus and others.

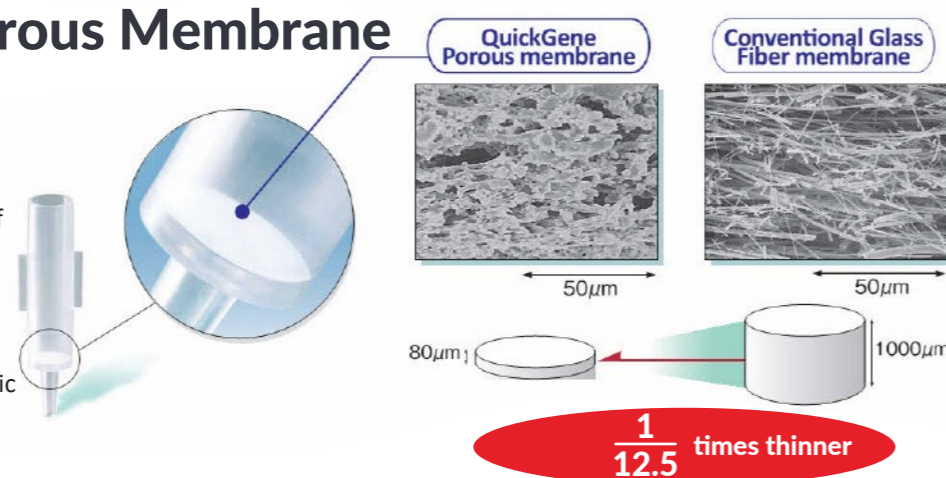
Compact design

- The small, lightweight QuickGene-Mini480 takes up minimal space on the lab bench and is easy to carry.
- No need to move the samples from the lab bench without centrifugation throughout the whole isolation process.



Revolutionary Porous Membrane

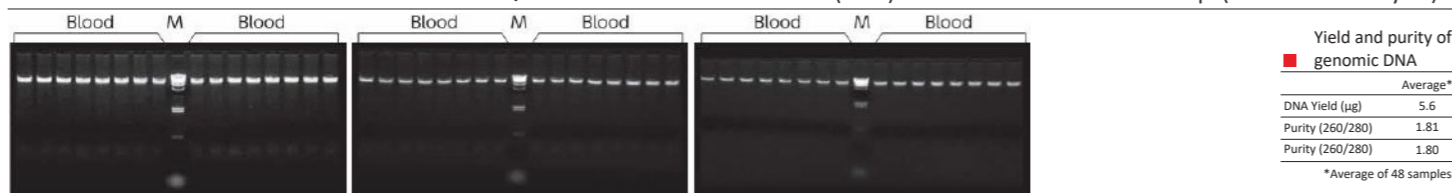
- The QuickGene-Mini480 uses patented porous membrane only 80µm thick.
- Depending on the outstanding adsorption/desorption performances of the membrane, high-purity nucleic acid can be easily obtained in high yield at low pressure.
- The ultra thin membrane enables nucleic acid isolation in shorter time than when compared to glass fiber membranes.



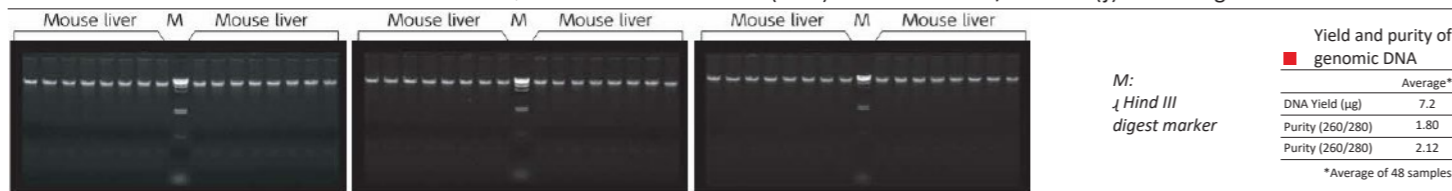
High Purity, High Yield

- The QuickGene-Mini480 can stably isolate nucleic acid yield.
- The isolated DNA/RNA can be directly applied to PCR, RT-PCR, Next Generation Sequencing Analysis, etc.

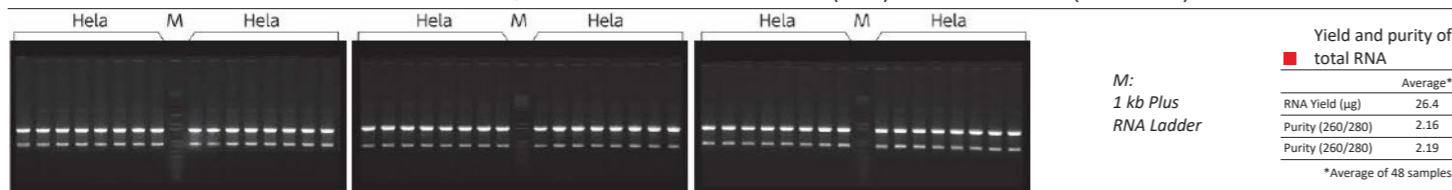
DNA isolation from whole blood • QuickGene DNA whole blood kit S (DB-S) • Human whole blood 200 µl (8x10⁵ cell leukocytes)



DNA isolation from mouse tissue • QuickGene DNA tissue kit S (DT-S) • Balb/C mouse (f) liver 10mg



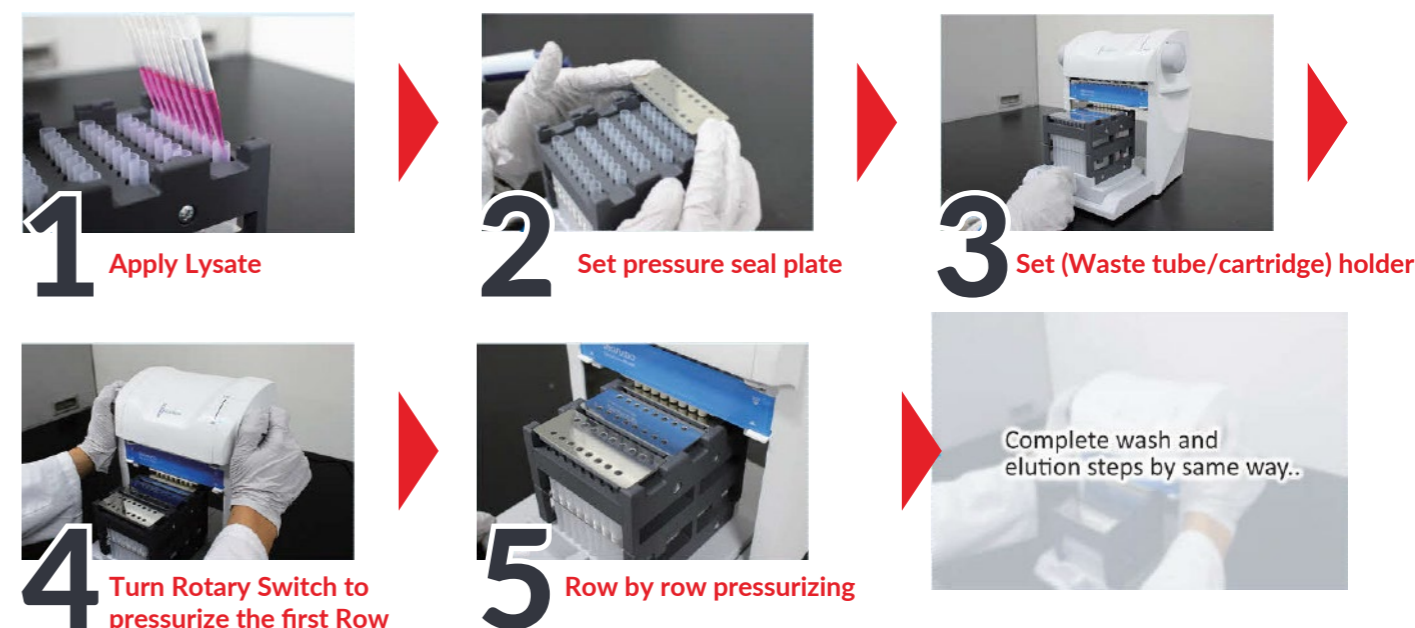
RNA isolation from cultured cells • QuickGene RNA cultured cell kit S (RC-S) • HeLa S3 Cell (1x10⁶ cells)



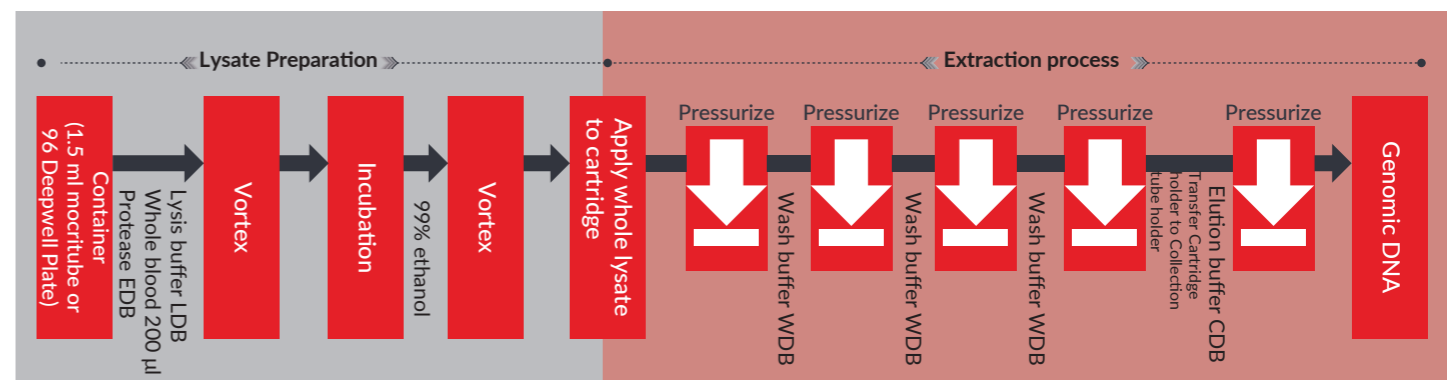
Easy & Rapid Processing

- The operation is simple. Just set the sample and rotate the grey pressurizing Rotary Switch on both side of the device.
- No centrifugation process, no need to remove and transfer the liquid after sample pre-treatment to save valuable time.
- Process 1 to 48 samples per run. And enhanced usability by using Multichannel Pipettes.

Pressurizing Process



Workflow of isolation using DNA whole blood kit



Processing time < 90 min / 48 samples

- Including sample pretreatment time
- In case of using DB-S kit, 96 Deepwell Plates and Multichannel Pipettes.



Pressurizing process

- 1) Set Holder into system
- 2) Rotate pressurizing switch toward the front side to start pressurizing
- 3) Make sure that there is no residual liquid in the cartridge and return the pressurizing switch to original position
- 4) Pull out holder from system